

# Fermat-1 RT 200MD Log

Format: Fermat-1 ARC Sonic    Vertical Scale: 1:200    Graphics File Created: 22-Dec-2008 05:04

## Parameters

DLIS Name	Description	Value
DO	Depth Offset	0.0 m

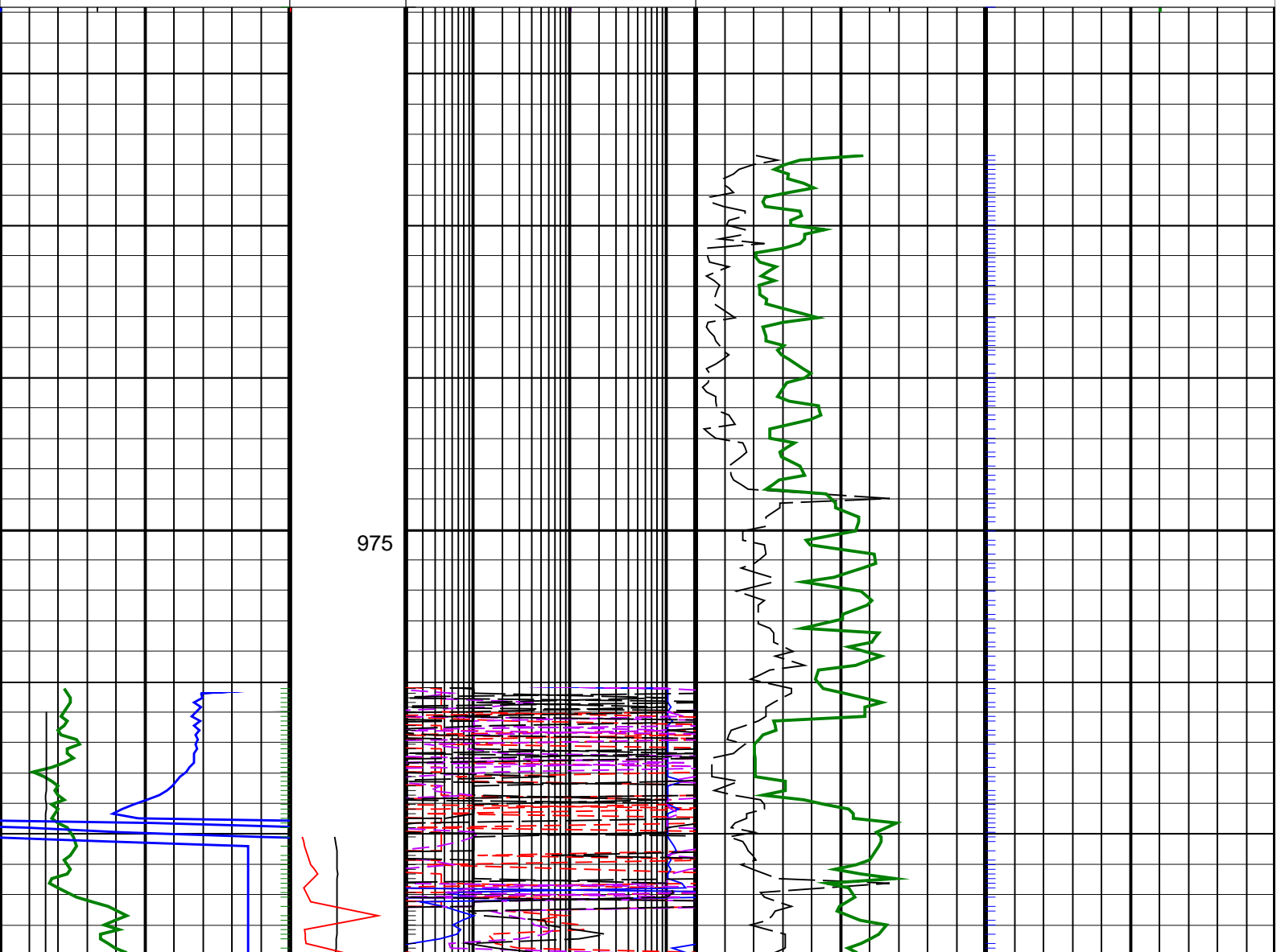
### PIP SUMMARY

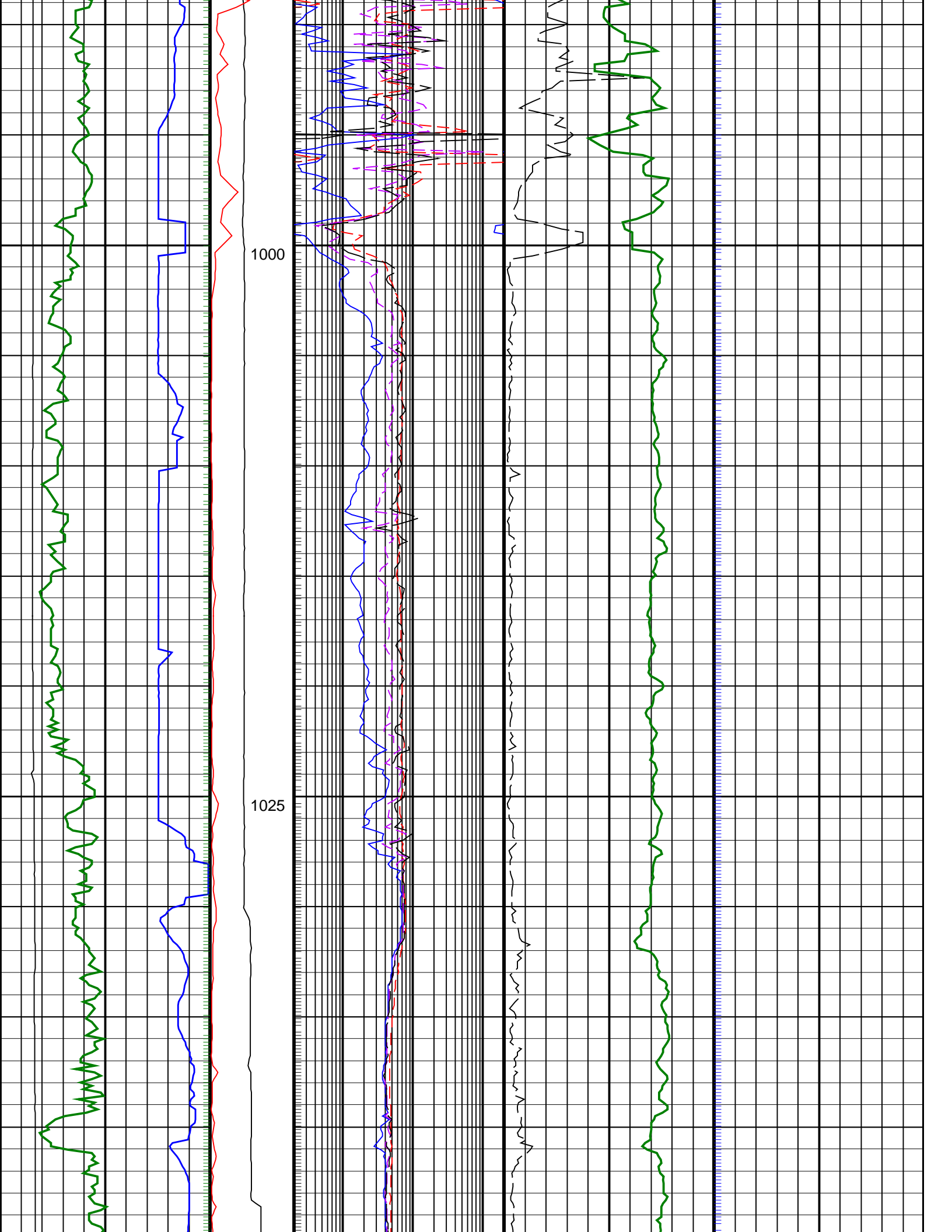
├ Gamma Ray Samples

Delta-T Samples ┘

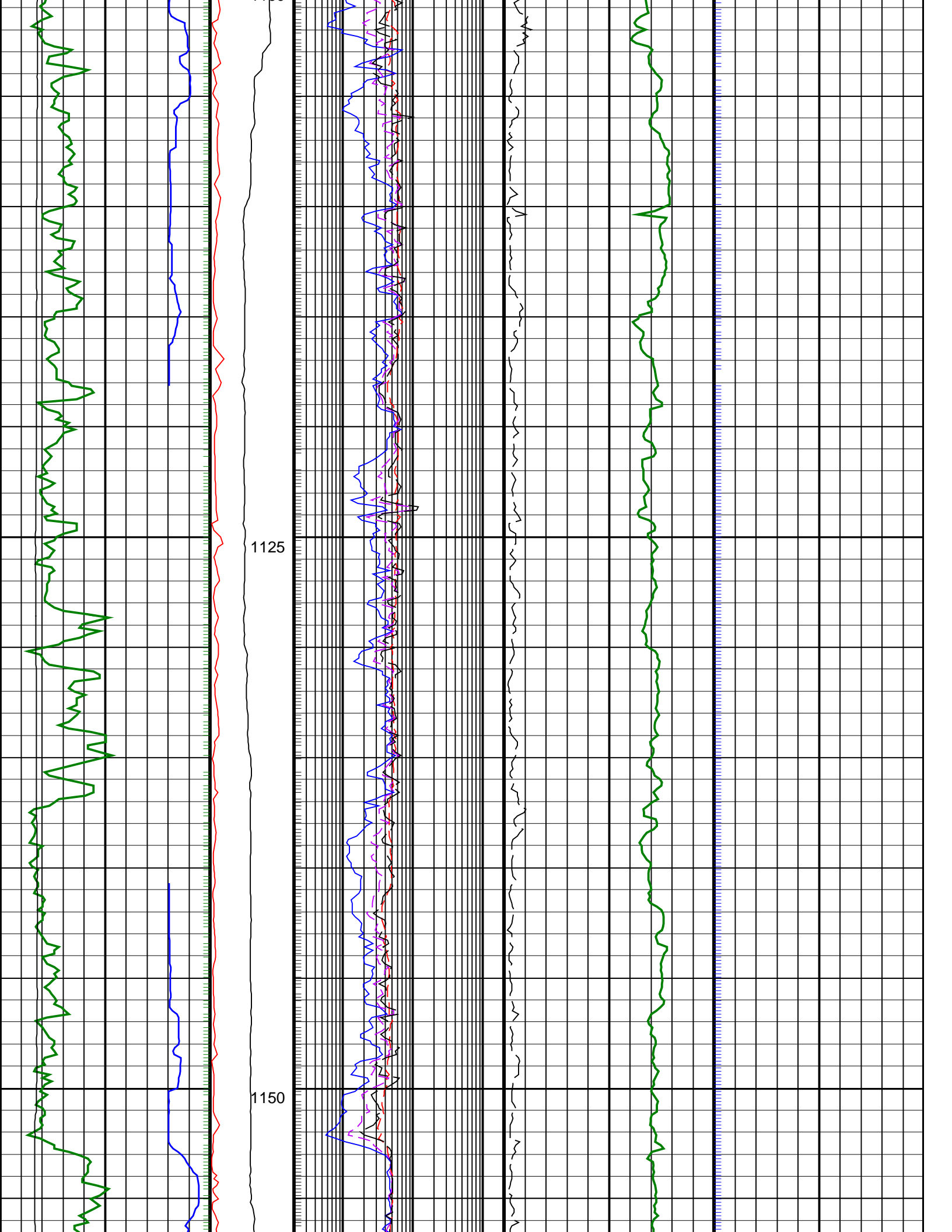
└ Resistivity Samples

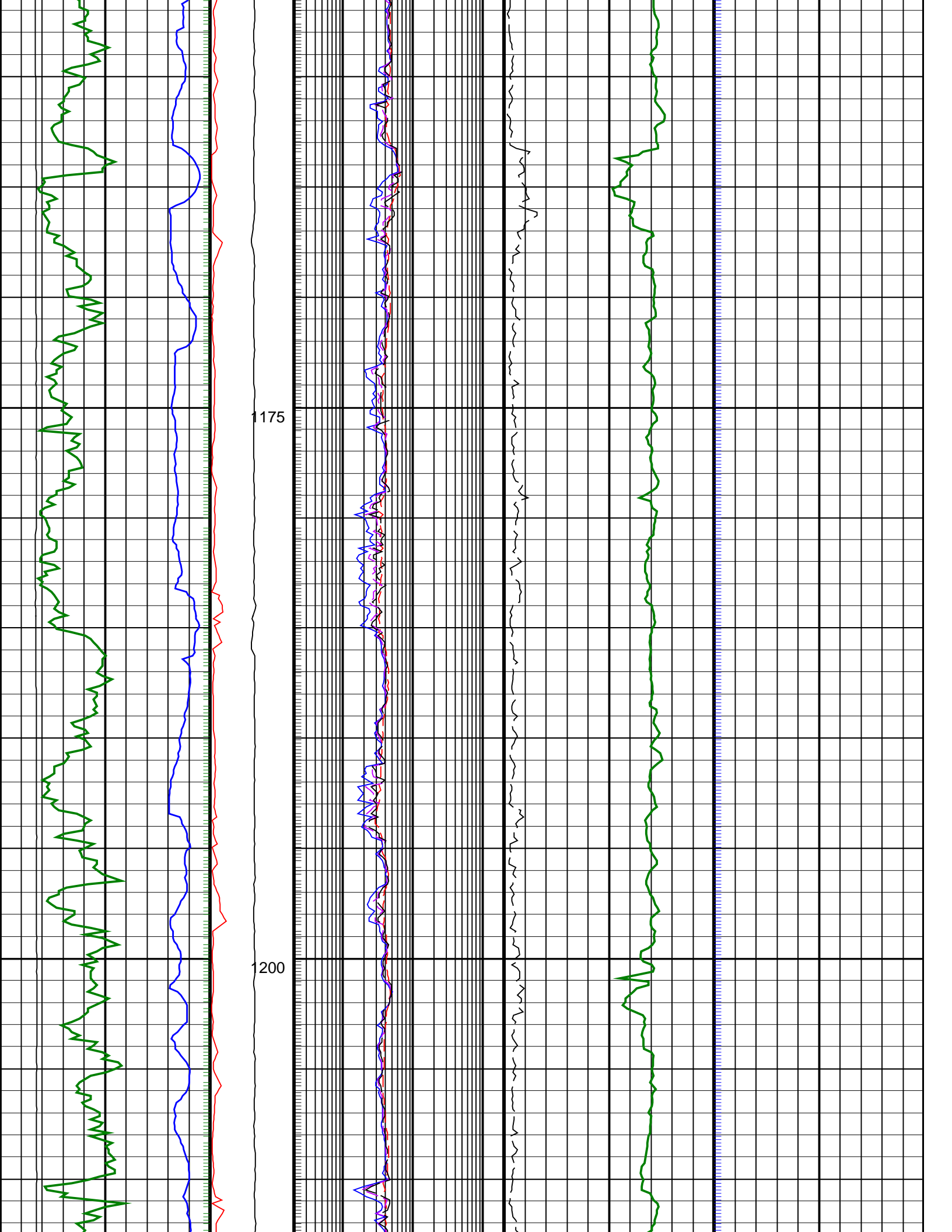
<p><b>ARC Gamma Ray, Real-Time (ARC_GR_RT)</b></p> <p>0 (GAPI) 200</p>	<p><b>ARC BHCorr Phase-Shift Resistivity 40-in. at 2 MHz, Real-Time (P40H_RT)</b></p> <p>0.2 (OHMM) 200</p>	
<p><b>ARC Equivalent Circulating density (ECD_ARC_RT)</b></p> <p>8 (LB/G) 20</p>	<p><b>MWD Collar RPM (CRPM_RT)</b></p> <p>0 250</p>	<p><b>ARC BHCorr Phase-Shift Resistivity 16-in. at 2 MHz, Real-Time (P16H_RT)</b></p> <p>0.2 (OHMM) 200</p> <p><b>Delta-T Compressional, Real-Time (DTCO_RT)</b></p> <p>40 (US/F) 240</p>
<p><b>ROP*5 (ROP5)</b></p> <p>200 (M/HR) 0</p>	<p><b>PKPK_RPM (Stick_RT)</b></p> <p>0 500</p>	<p><b>ARC BHCorr Attenuation Resistivity 40-in. at 2 MHz, Real-Time (A40H_RT)</b></p> <p>0.2 (OHMM) 200</p> <p><b>Coherence at Compressional Peak, Real-Time (CHCO_RT)</b></p> <p>4 (----) 1</p>

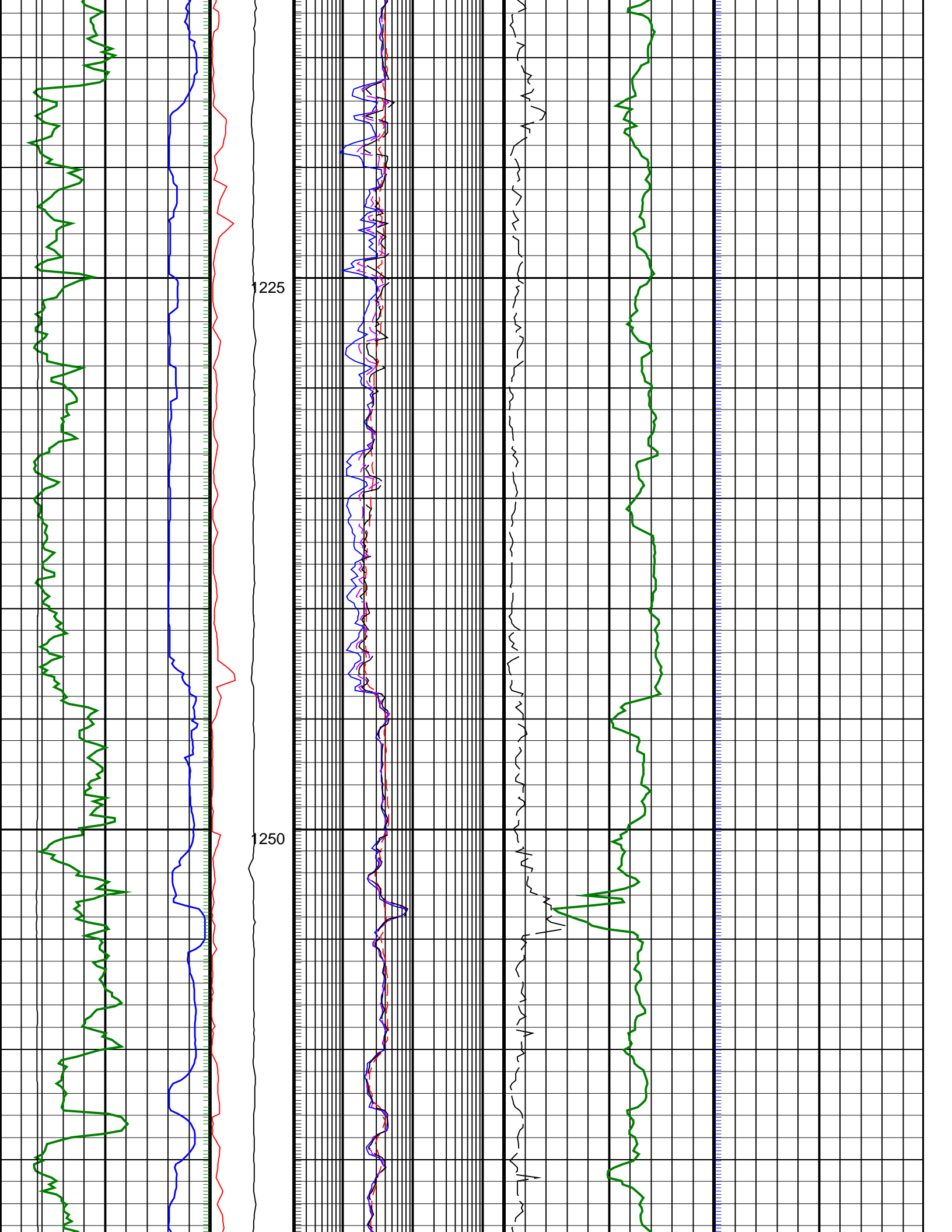


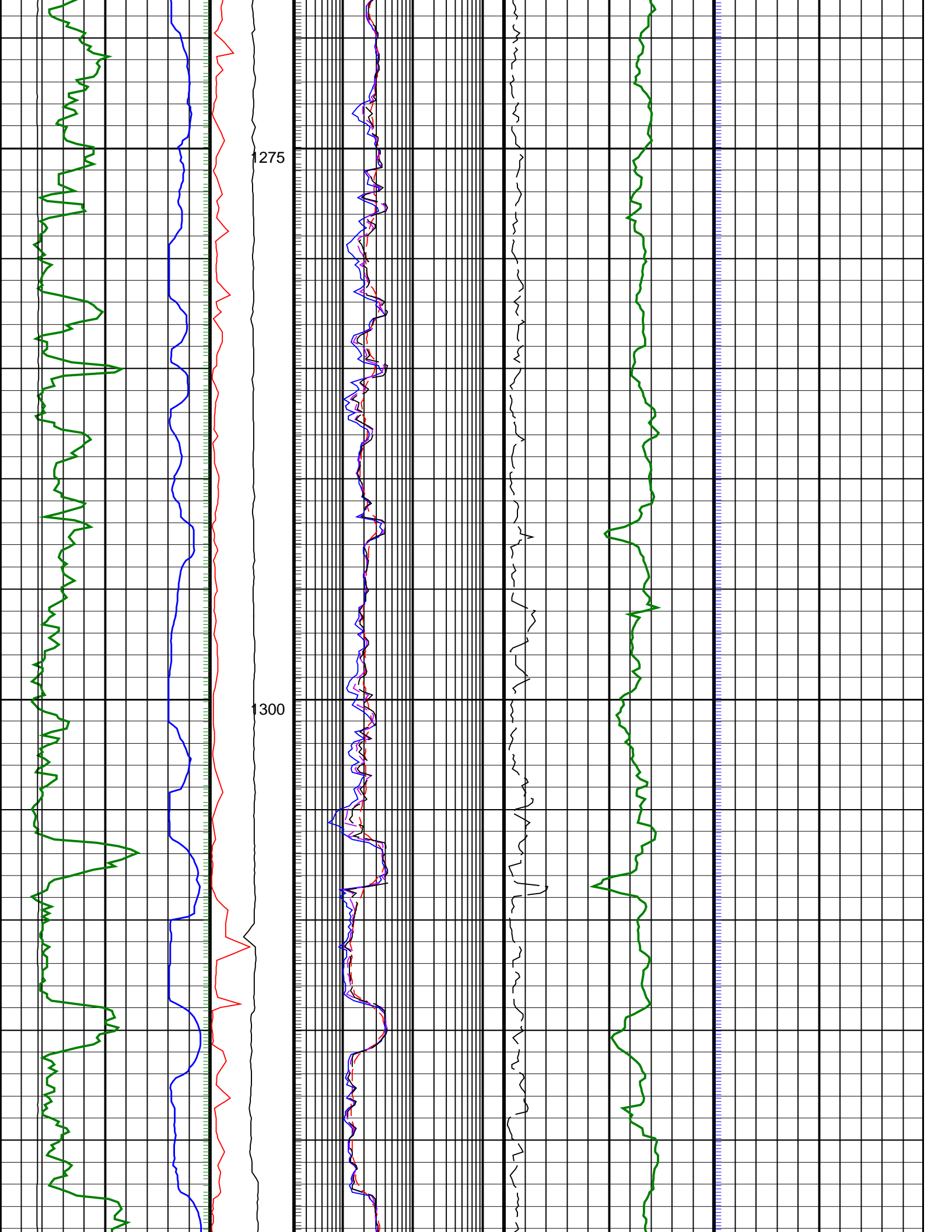


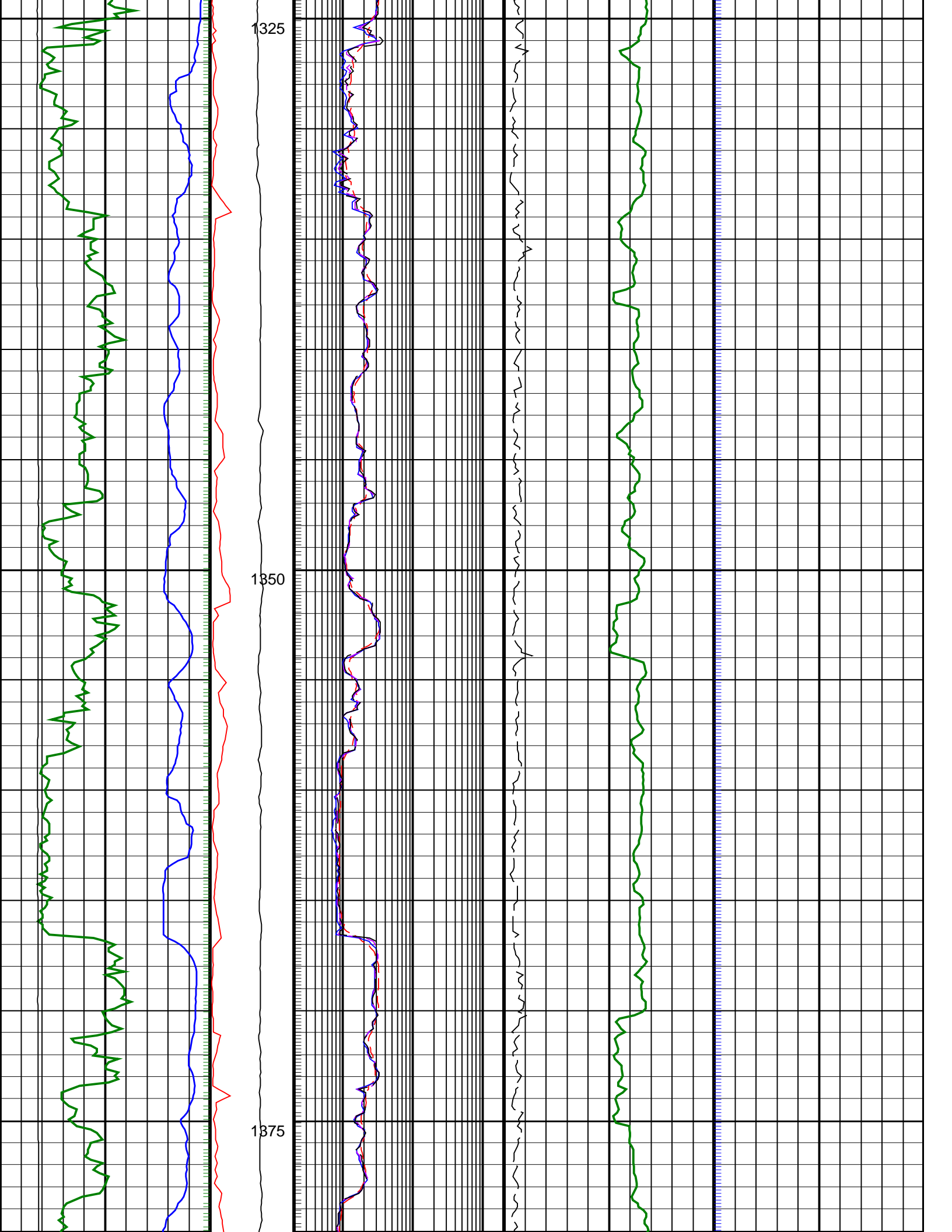






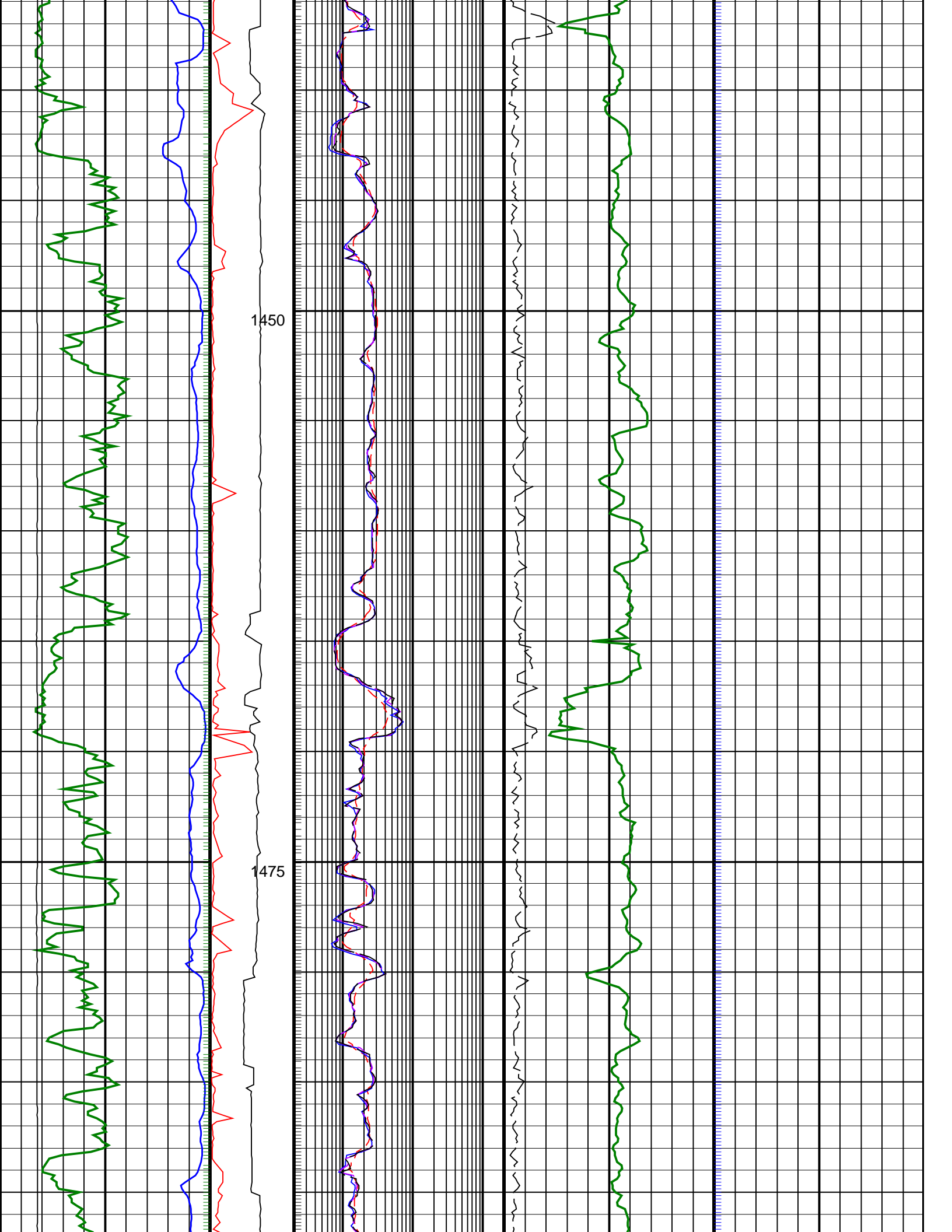


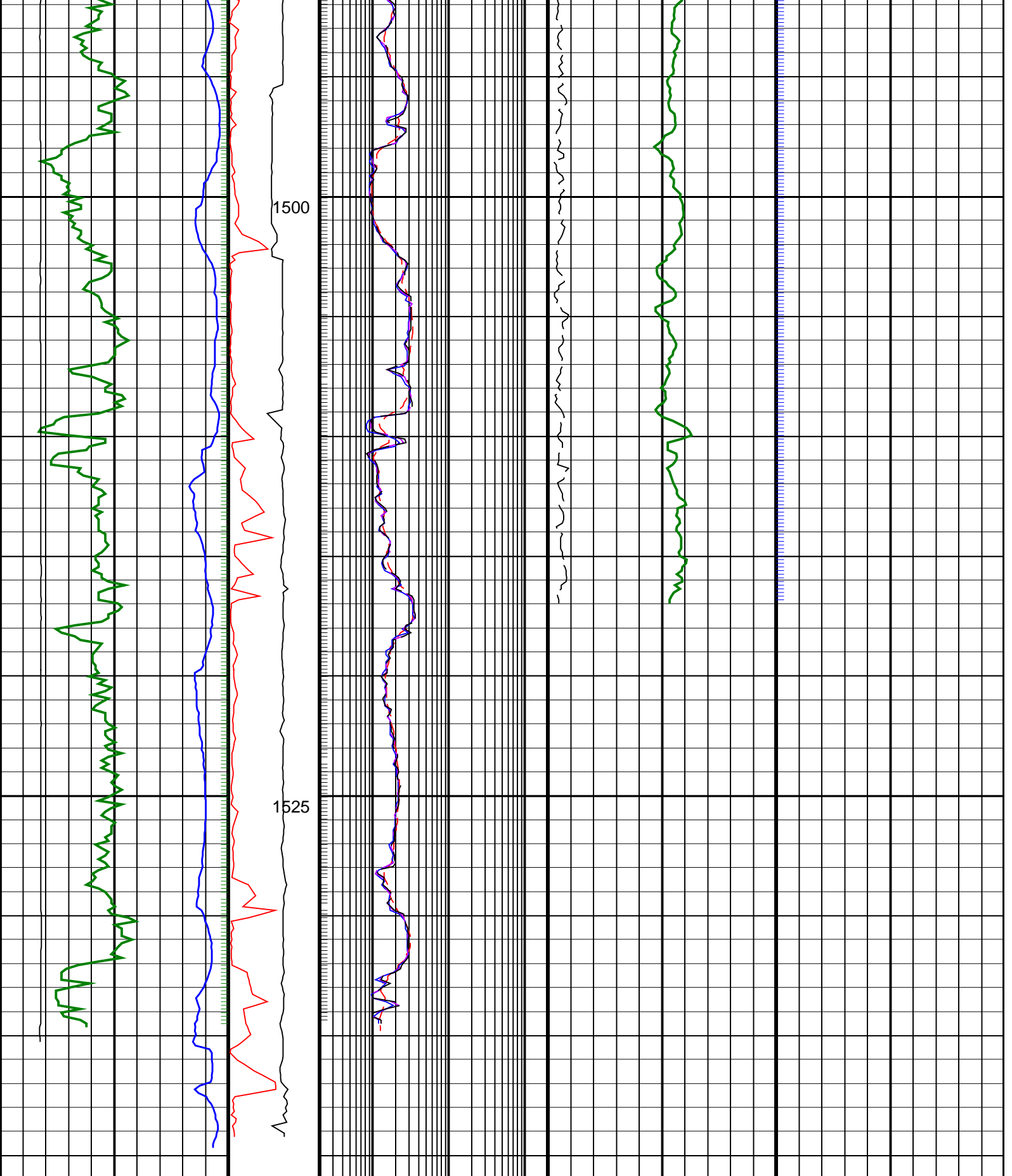












<p><b>ROP*5 (ROP5)</b> (M/HR)</p> <p>200</p> <p>0</p>	<p><b>PKPK_RPM (Stick_RT)</b> (RPM)</p> <p>0 500</p>	<p><b>ARC BHCorr Attenuation Resistivity 40-in. at 2 MHz, Real-Time (A40H_RT)</b> (OHMM)</p> <p>0.2 200</p>	<p><b>Coherence at Compressional Peak, Real-Time (CHCO_RT)</b> (----</p> <p>4 1</p>
<p><b>ARC Equivalent Circulating density (ECD_ARC_RT)</b> (LB/G)</p> <p>8 20</p>	<p><b>MWD Collar RPM (CRPM_RT)</b> (RPM)</p> <p>40</p>	<p><b>ARC BHCorr Phase-Shift Resistivity 16-in. at 2 MHz, Real-Time (P16H_RT)</b> (OHMM)</p> <p>0.2 200</p>	<p><b>Delta-T Compressional, Real-Time (DTCO_RT)</b> (US/F)</p> <p>240</p>

	0	250	0.2	(OHMM)	200
ARC Gamma Ray, Real-Time (ARC_GR_RT)			ARC BHCorr Phase-Shift Resistivity 40-in. at 2 MHz, Real-Time (P40H_RT)		
0	(GAPI)	200	0.2	(OHMM)	200

PIP SUMMARY

┆ Gamma Ray Samples

Delta-T Samples ┆

┆ Resistivity Samples

**IDEAL Version: ID13\_0C\_14**  
IDF